

# ASU<sup>®</sup> NewSpace

“One cannot discover new oceans unless he has the courage to lose sight of the shore.” André Gide

## Who is ASU/NewSpace?

The **ASU Space Technology and Science Initiative (“NewSpace”)** is a dedicated liaison bringing together commercial space ventures with Arizona State University’s internationally recognized resources to create real value in the space marketplace. With an extensive track record of successfully fulfilled NASA and Department of Defense space-related projects, ASU is a recognized leader in space science and engineering. In addition, ASU offers wide ranging expertise in space-related fields that can significantly enhance opportunities to win projects as well as to complete them successfully.

**ASU/NewSpace** makes accessing these resources effective and efficient. We provide a single point of contact to bridge between faculty, staff, students, and our commercial partners. With our flexible engagement model, we’re open to new ideas and opportunities. We’re committed to entrepreneurial values, innovative thinking, and streamlined processes in to generate bottom line results in space science and technology.

## Extensive Track Record of Project Success

This includes substantial involvement in all major NASA robotic space mission projects since the 1960s, significant development and leadership of cutting-edge smallsat instruments and missions, and high-value solutions for the US Department of Defense.

**#1 in the U.S.  
for innovation**  
#1 ASU #2 Stanford #3 MIT  
- U.S. News & World Report, 2016 and 2017



## Accomplished Pool of Principal Investigators

# 300

Over 300 research professionals who focus on space relevant disciplines are available, with over half being currently active in space related projects.

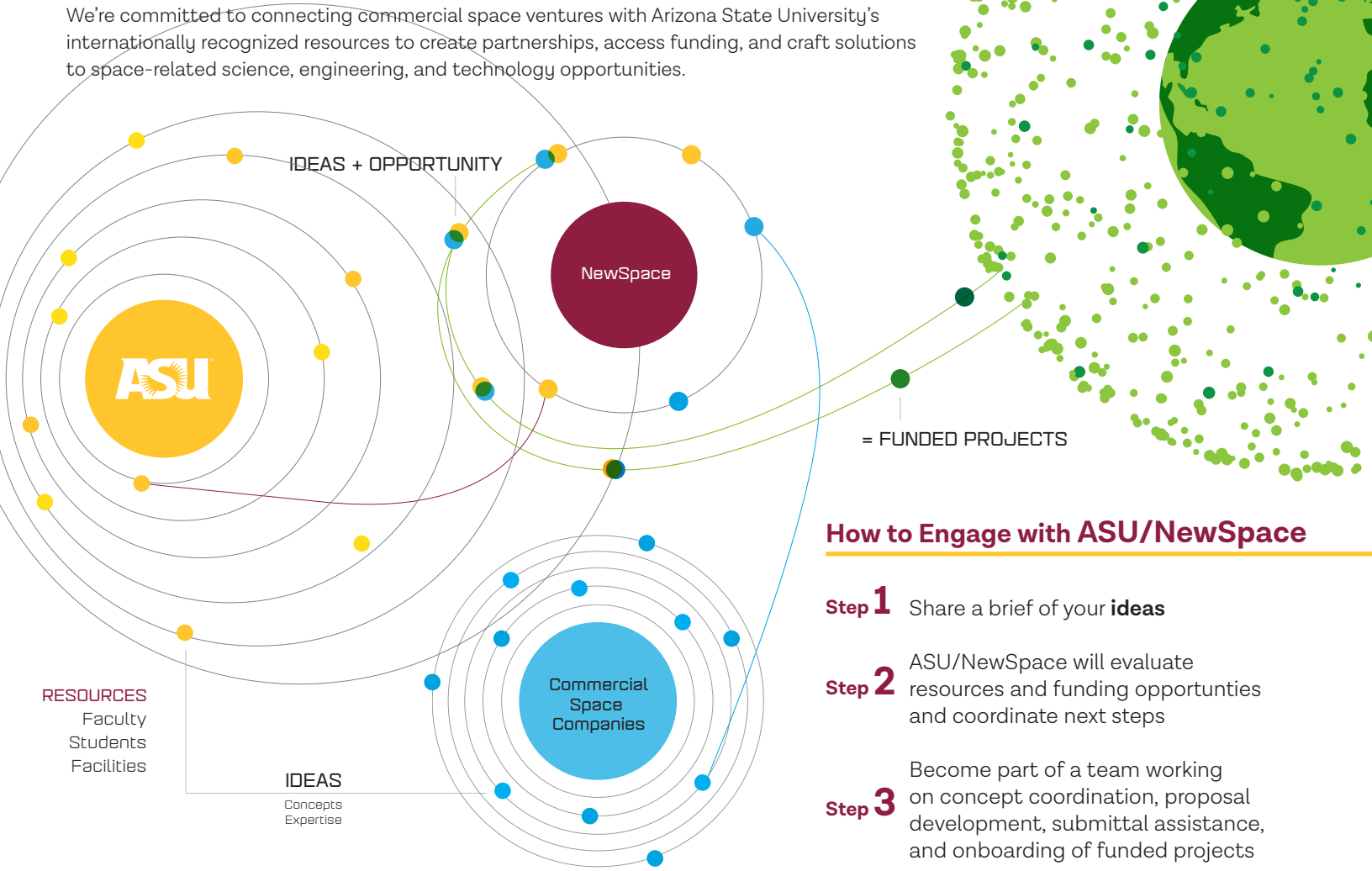
## The Place to Innovate

# 1.4<sup>m</sup> sq/ft space

ASU has financed the construction, operations, and maintenance of over 1.4 million square feet of space-related research buildings, representing a 50% increase in laboratory space since 2002 This includes more than **xx sq ft** of clean rooms with testing facilities for spacecraft instrumentation and small spacecraft fabrication and testing.

# ASU/NewSpace // Giving Ideas Escape Velocity

We're committed to connecting commercial space ventures with Arizona State University's internationally recognized resources to create partnerships, access funding, and craft solutions to space-related science, engineering, and technology opportunities.



## How to Engage with ASU/NewSpace

- Step 1** Share a brief of your **ideas**
- Step 2** ASU/NewSpace will evaluate resources and funding opportunities and coordinate next steps
- Step 3** Become part of a team working on concept coordination, proposal development, submittal assistance, and onboarding of funded projects

## NASA Funded Expenditures



**NASA Roadmaps Alignment** The 2015 NASA Technology Roadmaps specify anticipated mission capabilities and associated technology development needs through 2035. The roadmaps focus on applied research and development activities comprised of 15 distinct Technology Area roadmaps. Some build on proven capabilities. Others rely on development of new capabilities. ASU/NewSpace has identified relevant ASU resources that enable us to be a highly productive partner in the following Technology Areas: **Robotics / Autonomous Systems / Science Instruments / Observatories / Sensor Systems / Nanotechnology / Modeling / Simulation / Information Technology / Processing / Materials / Structures / Mechanical Systems / Manufacturing**

**Contacts:** Prof. Jim Bell, Director / Dr. Tanya Harrison, Research Director / Prof. Craig Hardgrove, Director of Projects / Scott Smas, Program Manager